

Seasons Greetings!
For a record 15th year, Coca-Cola Christmas in the Park takes to the stage to present the biggest, most talent-packed Christmas cracker of a show!

Since 1994, this home-grown Christmas extravaganza has been our special gift to millions of Kiwis, heralding in the Christmas season with a magical mix of music, dancing, fireworks and fun! It's grown beyond our expectations to become an iconic New Zealand celebration, a free family concert which generations of Kiwis look forward to and many have grown up with.

A vital aspect of this very special event is the opportunity Coca-Cola Christmas in the Park provides to a number of worthy causes to raise funds for projects that make a big difference to the health, wellbeing and safety of New Zealanders. This year the proceeds from Coca-Cola Christmas in the Park will go to Surf Life Saving to aid their ongoing work to help ensure the safety of New Zealand's beaches.

Coca-Cola has been in New Zealand for over 60 years and we look forward to being part of the local community for another 60, and beyond!

We hope you enjoy this year's concert and we look forward to seeing you there.

From everyone at Coca-Cola, Merry Christmas and happy times to all!

CAST AND CREW

MC'S
Petra Bagust and Jeremy Corbett

STARRING
Stig Eldred as Santa, Elemeno P, Jackie Clarke, Frankie Stevens, Tina Cross, *Sticky TV's* Drew Neemia, Sam Wallace and Erin Simpson, *Action Central's* Robert Enari, Gemma Copas, Elizabeth Marvelly, D.I.V.A., Tim Beveridge, Marjan Gorgani, Ainslie Allen, Cameron Douglas, Meryl Cassie, The Oti Brothers & Li'l Sister Mattia, Tumanako Farrell, Anthony Utama, Jodie Clarke, Catherine Campion, Edward Laurensen, Zoe Stevens, Joel Granger, Stephanie Field, Danielle Parker, Alexandra Foster, B4 nd After Quartet, Rosie Riggir, Anna Wilson, Louisa Collier.

AND ALSO FEATURING
The Coca-Cola Orchestra conducted by Penny Dodd, The Kids Crew – coordinated by Chris Bevan, M.A.G.S. Fusion Chorus – coordinated by Peter Su'a, Sweet and Sour, Tama Samoa, M.E.B.A. Ballerinas, Diamond Dance, Heart of the West Drummers

Produced by BEST EVENTS/Alan Smythe Special Events
Event Manager – John Searle
Show Producer – Kate Ward-Smythe
Musical Director – Penny Dodd
Choreographer – Ginny Crocker
Production Manager – Pak Peacock
Stylist – Estelle Macdonald
Stage Management – Carol Harding and team
Musician's Fixer – Mark Dennison
Logistics Manager – Fern Christie
Publicity – Deborah Delaney, DGA Ltd

PART 1

Show commences 7.30pm

TAMA SAMOA

WHAT TIME IS IT?

Drew Neemia, Catherine Campion, Anthony Utama, Meryl Cassie, Cameron Douglas & Jodie Clarke

SANTA CLAUS IS COMING TO TOWN

Rosie Riggir

SNOOPY'S CHRISTMAS

Edward Laurensen, Tumanako Farrell, Robert Enari, Cameron Douglas, Anthony Utama

I SAW MOMMY KISSING SANTA CLAUS

Gemma Copas & The Kids Crew

THE LITTLE DRUMMER BOY

Robert Enari & Heart of the West Drummers

HERE COMES SANTA CLAUS

Drew Neemia, Sam Wallace & Erin Simpson

IT'S THE MOST WONDERFUL TIME OF THE YEAR

Santa & M.E.B.A. Ballerinas

COLOUR MY WORLD

Stephanie Field, Danielle Parker & Alexandra Foster

CAROL OF THE BELLS

M.A.G.S. Fusion Chorus

AWAY IN A MANGER

Joel Granger

TE HARINUI

Louisa Collier & Anna Wilson

GOD REST YE MERRY GENTLEMEN

Edward Laurensen

ONCE IN ROYAL DAVID'S CITY

Zoe Stevens

WE THREE KINGS

Anthony Utama, Cameron Douglas & Tumanako Farrell

MARY'S BOY CHILD

B4 nd After Quartet

I'LL BE HOME FOR CHRISTMAS

Elizabeth Marvelly

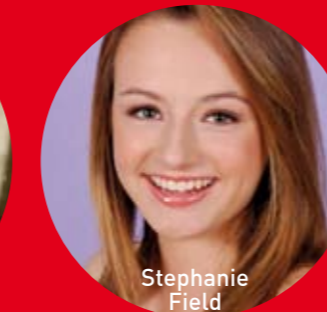
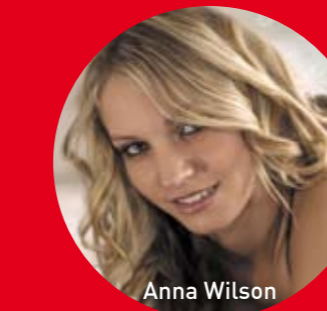
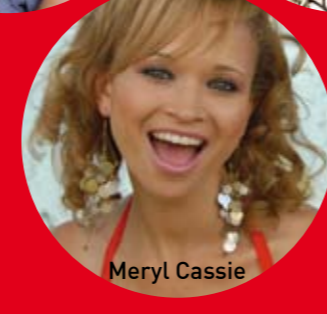
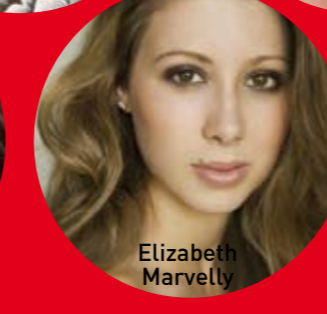
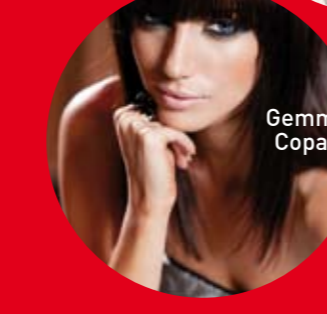
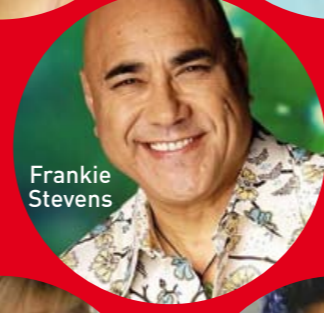
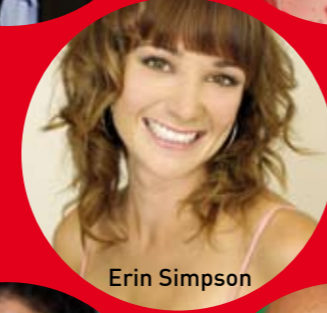
HAVE YOURSELF A MERRY LITTLE CHRISTMAS

Tim Beveridge & Marjan Gorgani

JINGLE BELLS

Tim Beveridge & Diamond Dance

INTERVAL



www.christmasinthepark.co.nz

PART 2

Commences approx 9.00pm

BEVERLY LAUREL

Elemeno P

BABY COME ON

Elemeno P

SWEET AND SOUR DANCE CREW

O HOLY NIGHT

Tim Beveridge & Elizabeth Marvelly

FANTASY

The Oti Brothers & Li'l Sister Mattia.

CAN'T BUY ME LOVE

Shane Cortese & D.I.V.A.

TWIST AND SHOUT

Shane Cortese, Tammy Davis, Siobhan Marshall, Antonia Prebble & D.I.V.A.

SOMEBODY TO LOVE

Gemma Copas

PEOPLE GET READY

Jackie Clarke & Tina Cross

TAKE ME TO THE RIVER

Frankie Stevens, Jackie Clarke & Tina Cross

WHEN LOVE COMES TO TOWN

Jackie Clarke, Tina Cross & Frankie Stevens

LET ME ENTERTAIN YOU

Drew Neemia

KIDS

Drew Neemia & Ainslie Allen

ABSOLUTELY EVERYBODY

D.I.V.A. & the cast of Coca-Cola Christmas in the Park

FABULOUS FIREWORKS FINALE

Approx finish 10.05pm

IMPORTANT INFORMATION

BUS INFORMATION

Avoid parking problems, take a bus or train to the concert! For bus or train information visit www.maxx.co.nz or call MAXX on 366 6400.

PARKING

There will be no parking in the Domain. Concert-goers are advised to park away from the Domain perimeter to avoid congestion.

FOR PEOPLE WITH DISABILITIES

An area in front of the stage will be set aside for the disabled from which to view the concert. Able-bodied drivers are asked to drop off disabled passengers and then park away from the Domain perimeter. If the driver of the car is mobility impaired, car parking will be available at the lower end of Carlton Gore Road [see map].

ROAD CLOSURES

Grafton Bridge is currently closed to all vehicle traffic (pedestrian and cycle access is open). Please consult map of The Domain and surrounding areas.

POSTPONEMENT

If weather prevents the concert from proceeding, it will be postponed until Sunday December 14th. If it is not possible to run on Sunday the concert will be cancelled. Please listen to 91.8 MORE FM for details.

RUBBISH / RECYCLING

Please refrain from bringing glass onto the park. You will once again have the opportunity to recycle rubbish so please – make a positive difference, do the right thing and use the right bin!

LIQUOR BAN AREA

A liquor ban will be in operation for a defined area around the Museum only – please see map below.

No "hawkers" or unauthorised sellers of goods allowed on The Domain.



TV3 is proud to be the broadcast partner of Coca-Cola Christmas in the Park. Tune in for the biggest outdoor party of the year, screening Sunday, December 14th, 7.30pm on 3.



Merry Christmas from His Worship the Mayor John Banks, and the team at Auckland City Council. As a long-standing event sponsor, the Council is delighted to host Coca-Cola Christmas in the Park in the Auckland Domain once again in 2008. The 75-hectare park has been developed around the cone of an extinct volcano. When Lieutenant Governor Hobson founded the city of Auckland with Ngati Whatua in 1840, he reserved 200 acres around the cone that became the Auckland Domain – New Zealand's oldest park – and the "tuff rings" created by volcanic activity have formed a natural amphitheatre. Auckland City Council invites you to sit back, enjoy the event and your beautiful surroundings.



Mercury Energy has helped make Coca-Cola Christmas in the Park a magical evening since the event began 15 years ago. This year Mercury Energy will once again bring the highlight of the evening to the Auckland community – the traditional lighting of the 20 metre tall Christmas tree.



The New Zealand Herald is a proud sponsor and official newspaper of Coca-Cola Christmas in the Park. As the country's leading daily newspaper we wholeheartedly support this magical annual event for Auckland city.



Operating for over 20 years, The Lion Foundation is one of the country's most respected charitable trusts. It funds thousands of good causes around New Zealand like Surf Life Saving New Zealand. In 2008, The Lion Foundation made 4,175 grants totalling \$47.5 million. The Lion Foundation is delighted to be part of Coca-Cola Christmas in the Park and would like to wish New Zealand a festive Christmas and a safe and happy holiday season.



Mainfreight is proud to again be associated with Coca-Cola Christmas in the Park.



SURF LIFE SAVING
NEW ZEALAND

Proceeds from Coca-Cola Christmas in the Park 2008 will assist Surf Life Saving to help prevent drowning and injury at New Zealand's favourite playground. We've been providing beach patrols since 1910 and today we provide lifeguard services at more than 80 of New Zealand's most popular beaches. Funds raised will go towards the purchase of essential Surf Life Saving rescue equipment and extending our services to meet the growing needs of our communities. Surf Life Saving is committed to making New Zealand's beaches as safe as possible for every New Zealander.

Surf Life Saving New Zealand Ambassadors Julia Toomey and Cory Hutchings



Meet the celebrities at our signing tent and be in to win great prizes with MORE FM, the proud radio sponsor of Coca-Cola Christmas in the Park.